

London Community Players
Palace Theatre Auditorium



Above photograph was taken during set up for Plaza Suite in September 2009. Note the Vertical hoist parked down stage left and ladder accessing side bar lighting.

The audience seating is in the process of being refurbished. Groups of seats are being replaced as finances allow. The auditorium seats 350.

The stage is 30 foot wide between the proscenium opening. Height of proscenium is 20' above stage floor. The apron extends in a curve from the auditorium left to auditorium right. The apron has a two step access to the auditorium floor across it's total width. The apron extends the stage, from the fire curtain line, by approx. 9 feet at the proscenium and by approx 5 feet at the auditorium sides. There are access doorways to backstage either side of the proscenium opening.

Approx. 1Foot upstage of the proscenium is the fire curtain line. In event of fire the fire curtain will free fall to the stage floor.

Stage floor is Plywood sheeting. **Set components may be secured to the floor by use of wood screws only. Lag Bolts or Stage Screws are not to be used for securing set components to the stage.. Set components shall not be secured to the stage walls.**

No Smoking is allowed within the theatre, its workshops, offices, rehearsal spaces or any area that is part of the Palace Theatre. Productions that require smoking as a part of their performances must use non tobacco products.

No open flame is allowed.

**London Community Players
Palace Theatre Technical
Communication, Stage Monitor, Lighting Control and Dimming , Sound System, Cyclorama**

Technical Booth: Technical Booth is located on the second floor of the Palace Theatre, immediately above the lobby concession area. It is accessible by a stairway leading from the public lobby. The booth has an unimpeded view of the stage through three windows. There are three work stations in the booth, Sound Operator, Stage Manager, and Lighting Operator. Individual work lights are present at each work station. Gel storage, and audio cable storage are located in the booth. House light dimmers are located immediately to the right of the Lighting Work station.

Communication: There are two communication systems in the booth.



(A) Airphone to the House Manager position in the concessions area, 1st floor lobby.

(B) Clear Comm communications controller. This controller is located at the Stage Manager's work station. This system provides "Headset" communication to 2 ports stage right and 2 ports stage left for use by Assistant Stage Managers. There are additional ports in the rear of the auditorium that can be used for Head Set use. Currently there are 2 headset units with belt packs plus one head set connected directly to the Clear Comm Controller. Additionally there are two "Squawk Boxes" located in the Green Room backstage and the second floor dressing/ makeup room. These allow the Stage Manager to communicate directly with these areas.

Stage Monitor: This system provides an audio feed to the following locations:

Technical Booth
Green Room
2nd floor Make Up/ Dressing Room
3rd floor Dressing Room/Costume area
Basement area below Green Room

This system utilizes a directional microphone mounted on the auditorium ceiling, in the rear quarter of the auditorium. This microphone feeds a 2 channel audio mixer that provides audio feed to the Infrared Assistive Hearing system as well as to the Stage Monitor system amplifier. This amplifier is shelf mounted in front of the Stage Manager's work station. The amplifier provides a 90 volt audio feed to speakers as noted above. Each speaker has its own Volume Control.

- Audio System:** The Sound system consists of 4 speakers, Audio Amplifier, Mixer Board, Equalizer, CD Player, and Wireless Microphone System.
- Speakers:** There are 4 speakers. Two are at floor level, normally positioned stage right and left of the Proscenium Opening. These can be moved to any on stage location. The other two speakers are mounted in the attic, at the audience right and left ceiling openings. These are normally used for pre show or house music.
- Audio Amplifier:** There are two Audio Amplifier is rack mounted at the Sound Operators Left. The amplifiers can be configured to feed both sets of speakers or either set of speakers.
- Mixer Board:** The mixer board is secured directly to the desk top in front of the Sound Operator's Work Station. It has the capability of mixing 8 channels of Audio feed to the Equalizer.
- Equalizer:** The Equalizer accepts the Mixed Audio signals from the Mixer and conditions them before they are sent to the Audio Amplifier.
- CD Player:** There are two CD Players available providing Stereo Feed to the Mixer Board. Each CD Player requires 2 audio channels on the Mixer. These Cd Players can be substituted by user supplied equipment such as computers etc. The Mixer will accept Analog Audio only.
- Wireless Mike:** There are 2 handheld transistor battery powered Microphones that transmit a Frequency Modulated signal to a receiver/amplifier located in the Technical booth on the shelf above the Sound Operator's work station. This system allows for the use of either or both Microphones to feed to the Mixer Board. These may be used to make Emergency announcements to the House, or for" Voice Overs".

Additionally there is a rudimentary telephone bell ringing system that allows rotary dial phones to be rung on stage from the booth.



*Sound Operator's work station. Window can be opened.
Photo is out of date*

Lighting System

Lighting Controls: Current Lighting controls utilizes Light Factory software. This is resident on a Toshiba laptop computer. Details on Light Factory software are available at <http://www.lifact.com/products.php> as a free download.



Lighting controls at Lighting Operator's Work Station. The Entec Playback wing is the console on the left.

An Ethernet signal from the Computer is transmitted through an Ethernet hub to an Entec Ode, that translates the Ethernet signal into DMX 512. All DMX 512 devices are 5 pin XLR only. The Ethernet Hub allows multiple Ethernet signals to interact with the program.

Other stand alone DMX 512 controllers may be substituted at this point provided they have CSA or UAL approval.

An Entec Playback wing is also connected to the Ethernet Hub. When programmed from the Light Factory software, the Playback wing allows for 10 manual SUB masters as well as a GO/BACK UP push switch that will advance the cue list. An external monitor is also available. This allows for multiple display during setup and during operation allows the stage manager to monitor or advance the Cue list.

During set up, the 10 ft Ethernet cable normally in use can be substituted by a 100 foot Ethernet cable. This allows the computer, monitor and mouse to be moved to a table set up near audience front.

The DMX 512 signal cable is routed to a DMX splitter/Isolator box mounted on the catwalks between the Stage firewall and the Front of House Lighting positions. The DMX 512 splitter/Isolator provides 8 identical DMX 512 signals from the single DMX 512 input signal. This allows the user group to utilize multiple DMX 512 devices while minimizing signal cable length and eliminating potential cross-talk between DMX devices. User groups should be prepared to provide their own DMX 512 cables with 5 pin XLR connectors, with the exception of the DMX cables servicing the 2 dimmer packs.

Dimmers: Currently there are 40 dimmers available. Dimmers 1 through 24 are located in a Lee ENR dimmer console, Mounted on the catwalk immediately above stage centre. Dimmers 25 through 36 are in a Strand COBO pack mounted on the catwalk for Front of House Lighting. All Dimmers are 2 outlet, 110 vac 20 amp. Each of these dimmer packs has a fusible disconnect switch mounted on a wooden panel above the Strand COBO pack. A CHAUVET 4 dimmer pack has been installed on the stage right wall. These dimmers are limited to 5 amps each. They are numbered 37 to 40. This pack should be used only for on stage practical lamps. These dimmers use standard U ground electrical plugs.

Lighting positions:

Overhead lighting is hung from a 2 inch piping grid suspended from building steel. These positions are accessible from on stage by use of a GENIE vertical Hoist. 20 foot and 30 foot ladders are also available if set construction precludes or limits accessibility by the vertical hoist. Power cabling to the selected hang points on the lighting grid are routed from the appropriate dimmer through ceiling openings. Care should be taken to minimize trip hazards by avoiding use of the catwalk flooring for running cables.

Lighting Positions:

Front Of House Lighting instruments are suspended from a 2 inch pipe welded to the transverse cross walk or from the rails of the cross walk. Power cabling to the selected hang points is run from the appropriate dimmer to the hang point. Care should be taken to run cabling beneath the catwalk to avoid trip hazards.

There are 3 Side bars located either side of the auditorium approximately 6 feet to the stage side of the auditorium emergency exits. Each of these side bars are attached to the auditorium walls. The lowest is 10 feet above auditorium floor level, the other 2 are mounted at 3 foot intervals vertically. Each of these sidebars can support 2 Lighting Instruments. Power cabling has been run to each of the bars terminating in a 2fer 20 amp Twist Lock plug. The other end of these cables can be found draped over the Panel supporting the Fusible Disconnect switches above the Strand COBO pack.

Safety Procedures :

Overhead Lighting:

When using the vertical hoist the operator must wear a full body fall restraint harness attached to the hoist. The stage area in the immediate vicinity of the hoist must be cleared of all personnel. A spotter should be employed to warn other personnel to stay clear. The hoist operator must secure all hand tools by the use of wrist straps. The spotter must wear a hard hat. A minimum of three legs must be extended from the hoist and be in contact with the floor during any period that the operator is physically on the hoist.

Personnel working on the catwalks, or in the attic must wear Full Body Fall Restraint Harnesses:

Front Of House Lighting:

When work is being performed from the Front Of House Lighting catwalk, a person must be designated as a spotter to direct traffic away from areas immediately below the work area. This person must wear a hard hat. Personnel working from these catwalks or in the attic area must wear a Full Body Harness Restraint Harness: All hand tools must be secured by wrist straps.

Side Bar Lighting:

The Side Bar lighting is accessible by ladder. A 30 foot ladder should be used to access the upper hanging position. The ladder should be tied off to one of the side bars. A person must be designated as a spotter to direct traffic away from areas approaching in any direction the ladder. This person can be used to assist in raising the ladder and aid in supporting the ladder base. This person must wear a hard hat. The use of ropes to raise the lighting instrument to the desired location is encouraged.

Lighting Inventory as of August 12, 2009

Instrument	Wattage	Quantity
Fresnel 7"	500 W	12
Strand Fresnelite	750 W	13
Colortran 30°	500 W	10
Colortran 30°	1000 W	9
Strand Lekolite	500 W	6
Pattern 23	500 W	6
Altman Shakespeare 15-35°	575 W	3
Altman Shakespeare 30-50°	575 W	7
Strand Mini Zoom 25-50°	500 W	2

There is sufficient cable and 2fers to handle 48 lights or more. A more detailed survey may be available in the future.

Cyclorama and Stage Rear Curtain:

The rear curtain is centre split. Curtain pull is at stage right edge of curtain. Curtain may be opened to expose desired width of cyclorama

The cyclorama and its back curtain are mounted on a pipe that may be winched up or down.

The cyclorama can be gathered to its pipe and raised , so that clearance is maximized for in loading of set components.

There is no lighting equipment dedicated to the purpose of lighting the cyclorama.

Backstage Facilities

Loading In: Immediately behind the stage and fire door accessible to the stage is a small workshop/storage space. This room opens to the municipal car park on the North East corner of the building. Majority of standard size set pieces may be unloaded through this room. There is space for a truck to back up to the loading door.

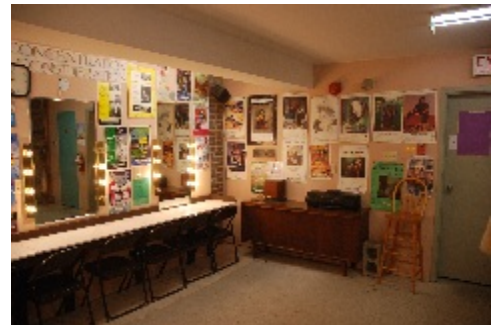
Green Room: Green Room is located off stage right. The room is equipped with kitchen sink, and refrigerator. The Green Room exits directly to the municipal car park on the North West corner of the building. Stage sound is piped into this room. Communication to the Stage Manager and/or ASM is available by squawk box.



Two views of Green Room . Door in view on left leads to the North West Stair Well and municipal parking lot

Make Up & Dressing Room;

There is a makeup/dressing room located on the second floor immediately above the Green Room. It is accessed from the North West stair well. It has a washroom & toilet. Stage sound is piped into this room.. Communication to the Stage Manager and/or ASM is available by squawk box.



2 views of 2nd floor Make up & Dressing Room

3rd Floor Dressing Room



The 3rd floor dressing room is spartan. It does however have a washroom and toilet. In the view on the left the closed door leads to London Community Players costume storage. Stage sound is piped into this room. Communication to the Stage Manager and/or ASM is available by squawk box.

There is also a washroom located in the basement by the North West stairwell. Stage sound is piped into this area.

SAFETY PRECAUTIONS:

During periods of set construction or set strike CSA approved safety helmets and steel toed boots shall be worn by all personnel working on the set or crossing the stage during set construction. During set construction the stage and immediate area is considered to be a construction area.